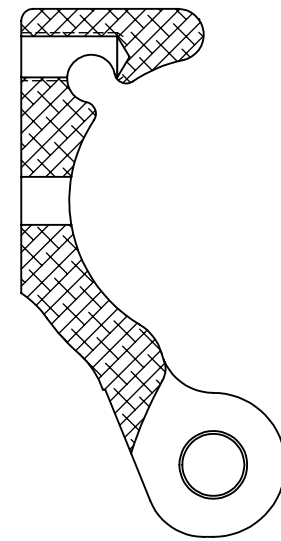
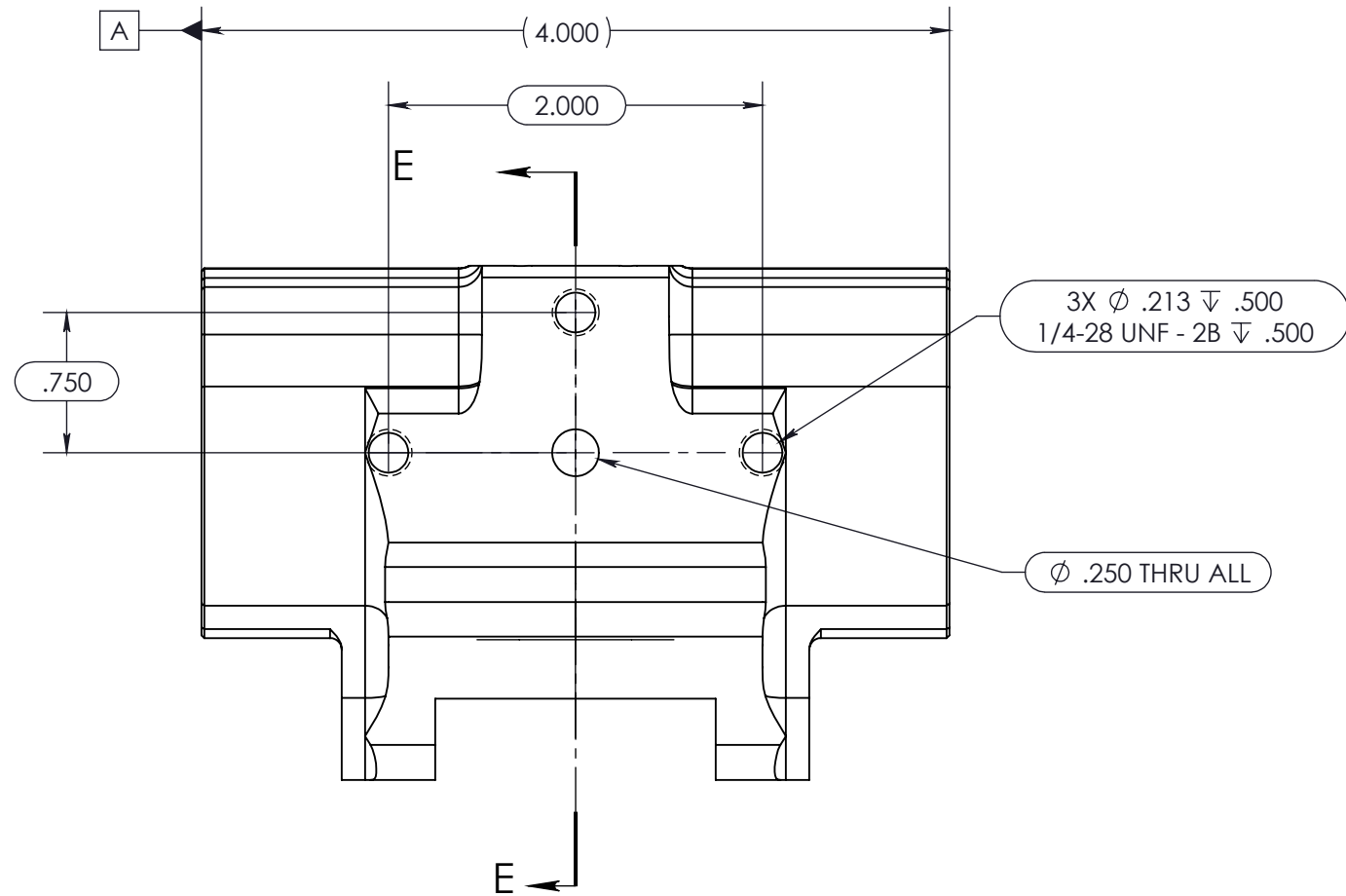
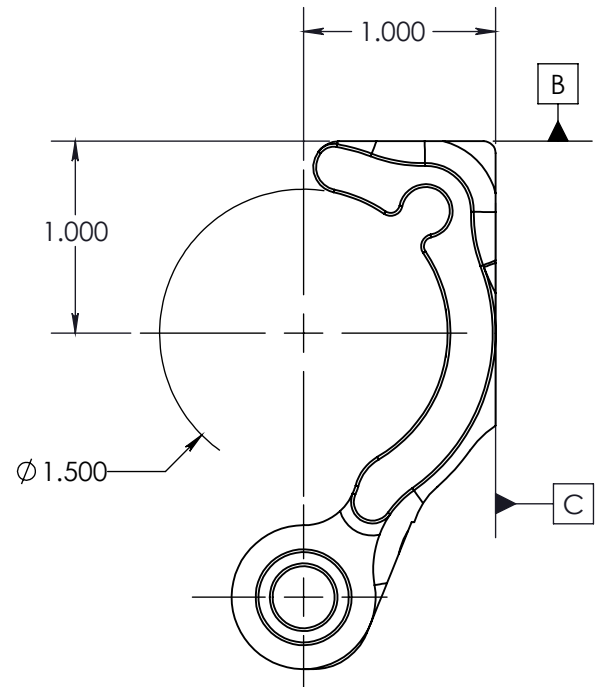
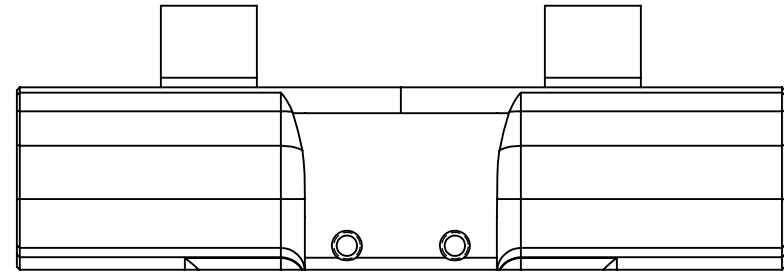


**UNLESS OTHERWISE SPECIFIED:**

1. ALL DIMENSIONS AND TOLERANCES APPLY AFTER ALL OPERATIONS AND IN FREE STATE
2. PARTS DEVIATING FROM THIS PRINT WILL NOT BE ACCEPTED WITHOUT PRIOR WRITTEN AUTHORIZATION
3. FINISH: N/A
4. IF IN DOUBT, ASK

REVISIONS		
REV	DESCRIPTION	DATE
01	FIXTURING RELEASE	10/12/2011



SECTION E-E

THIRD ANGLE PROJECTION

INTERPRET DIMENSIONS AND TOLERANCES PER ASME Y14.5M-1994.

**PROPRIETARY AND CONFIDENTIAL**  
 THE INFORMATION CONTAINED IN THIS DRAWING IS THE SOLE PROPERTY OF LUXON ENGINEERING, LLC. ANY REPRODUCTION IN PART OR AS A WHOLE WITHOUT THE WRITTEN PERMISSION OF LUXON ENGINEERING, LLC IS PROHIBITED.

- UNLESS OTHERWISE SPECIFIED:**
1. REMOVE ALL BURRS AND SHARP EDGES TO MAX R 0.005 INCH 0.125 MM
  2. TOLERANCES:
 

	INCH	MM
X.	± .125	±3.200
X.X	± .030	± .800
X.XX	± .010	± .250
X.XXX	± .005	± .125

 ANGULAR: MACH ±2 DEG.  
 BEND ±5 DEG.
  3. FINISH  $\sqrt{125}$  OR BETTER

CLIENT:	MaxGrip Systems		4132 Campus Ave #7, San Diego, CA 92103 Phone (858)699-5313
PROJECT:	MaxGrip Systems		
DESIGNER:	B. WIGHT	10/12/2011	TITLE:
MATERIAL:	6061-T6		Dumbbell Arm FIXTURE
WEIGHT:	0.31 LBS.		PART NUMBER:
UNITS:	INCH		WP-DB-001-F
DO NOT SCALE DRAWING			SCALE: 1:1
			SHEET 1 OF 1
			REV X01.02
			SIZE B